

HELIUM-4 ENERGY AND SPECIFIC HEAT IN SUPERFLUID AND NORMAL PHASE

A. A. Rovenchak

*Ivan Franko National University of Lviv, Department for Theoretical Physics,
12 Drahomanov Str., Lviv, UA-79005, Ukraine*

(Received March 30, 2002; received in final form July 12, 2002)

The calculation of the ^4He energy and specific heat is carried out in a wide temperature range within the two-time temperature Green functions approach. The approximation improving the random phase approximation is developed providing the correct behaviour of the calculated specific heat at the temperatures $0 < T/T_c < 0.65$ and $T/T_c > 1.32$ where T_c stands for the phase transition point.

Key words: liquid helium-4, specific heat, superfluid and normal phase.

PACS number(s): 05.70.Ce, 67.20.+k, 67.40.-w

I. INTRODUCTION

The problem of the theoretical description for the many-boson system thermodynamics in a wide temperature range is a very curious one and still remains unsolved. Liquid ^4He is the best example for the theoretical studies because of its anomalous low-temperature behaviour. It is well-known how to obtain the thermodynamic functions in the limit $T \rightarrow 0$ (this is given by the theory of Bogoliubov [1]). The renormalization group theory also gives a fairly well results at the point of the lambda-transition [2]. But still, quite a large temperature range might be studied by means of numerical computations only.

Sears [3] utilized neutron scattering results in order to determine the internal energy of liquid helium-4 via some simple thermodynamic relations. For these calculations, the potential of Aziz *et al.* [4] was used for representing the He–He interatomic interaction.

Path Integral Monte Carlo (PIMC) technique which allows for the study of the physical quantities temperature dependencies was utilized by Ceperley and Pollock [5] for the helium-4 thermodynamic properties calculation at the temperatures above 1 K. Kinetic energy of liquid and solid helium-4 was calculated in [6] at high temperatures. Such numerical simulations are numerous and we do not intend to analyze them here. The overview of Path Integral Monte Carlo (PIMC) techniques application in the theory of condensed helium is presented in the paper by Ceperley [7].

The derivation of the analytical relations for the thermodynamic properties was made by Vakarchuk [8]. In the first of the cited works, the expression for the many-boson two-particle density matrix was written. The second work contains the analysis of the non-linear density fluctuations contribution into the thermodynamic properties of the Bose-system. The expressions found there are expected to provide a good description in a wide temperature range.

In this work, we will proceed from a very well studied random phase approximation (RPA) which allows one to obtain a low-temperature asymptotics for the thermodynamic and structure functions of liquid ^4He .

Then, making some quite natural assumptions, we will develop what might be called ‘effective post-RPA’ since the post-RPA corrections will be taken into account in an effective manner. In principle, such a technique will move us substantially ahead from the low-temperature region. But unfortunately the way of the equations solution applied here does not allow to grasp the temperatures $|T/T_c - 1| \lesssim 1/3$ where T_c stands for the lambda-transition point, this seems to be rather a technical problem.

In this paper, we use the previously obtained potential [9] for the calculation of thermodynamic properties of liquid helium. A two-time temperature Green function technique will be utilized for the calculation of the energy and specific heat. The application of this technique is well-known, it was used by Tserkovnikov [10] for the non-ideal Bose-gas in the random phase approximation. Additionally, this method leads to a quite short way to the RPA (Bogoliubov’s) results. Unlike what is usually done, the collective variables being the density fluctuations Fourier components are utilized for constructing the Green functions instead of the creation–annihilation operators.

The organization of the paper is as follows. In Section II, we introduce the operators for the Green functions and write the Hamiltonian. In Section III, the equations of motion are written and solved. Next, the function $\gamma_k(T)$ for the accounting of post-RPA terms is introduced. The equations for it are derived in Section IV. Also, the expression for the free energy is written and other thermodynamic functions are derived from it in this Section. The discussion is presented in Section V.

II. COLLECTIVE VARIABLES AND HAMILTONIAN

We consider operators

$$\rho_{\mathbf{k}} = \frac{1}{\sqrt{N}} \sum_{j=1}^N e^{-i\mathbf{k}\mathbf{r}_j}, \quad (1)$$

$$\hat{\pi}_{\mathbf{k}} = \frac{1}{\sqrt{N}} \sum_{j=1}^N e^{-i\mathbf{k}\mathbf{r}_j} \left(\frac{-i\hbar^2}{m} \mathbf{k} \nabla_j \right), \quad (2)$$

$$\hat{\xi}_{\mathbf{k}} = \frac{1}{\sqrt{N}} \sum_{j=1}^N e^{-i\mathbf{k}\mathbf{r}_j} \left(\frac{-i\hbar^2}{m} \mathbf{k} \nabla_j \right)^2, \quad (3)$$

the operators $\rho_{\mathbf{k}}$ being collective variables, operators $\hat{\pi}_{\mathbf{k}}$ are usually known as ‘currents’. No special name will be given to $\hat{\xi}_{\mathbf{k}}$. In the above expressions, N is the number of particles, m is the mass of ${}^4\text{He}$ atom.

The Hamiltonian \hat{H} of the system is written as $\hat{H} = \hat{H}^{(0)} + \Delta\hat{H}$ where $\hat{H}^{(0)}$ corresponds to RPA and $\Delta\hat{H}$ is the respective correction. Hereafter we will consider only RPA term and therefore use \hat{H} to designate $\hat{H}^{(0)}$:

$$\hat{H} = \hat{K} + \hat{\Phi} \quad (4)$$

where \hat{K} and $\hat{\Phi}$ being the kinetic and potential energy in RPA respectively.

We have the following expression for the potential energy operator in ρ -representation:

$$\hat{\Phi} = \frac{N(N-1)}{2V} \nu_0 + \sum_{\mathbf{k} \neq 0} \frac{N}{2V} \nu_k (\rho_{\mathbf{k}} \rho_{-\mathbf{k}} - 1), \quad (5)$$

where ν_k means the Fourier transformation of the interatomic potential in helium [9], while the kinetic energy is given in a usual way:

$$\hat{K} = -\frac{\hbar^2}{2m} \sum_{j=1}^N \nabla_j^2. \quad (6)$$

It is interesting as well to consider the ρ -representation for \hat{K} . Neglecting terms with two sums over the wave vector (i. e., leaving the RPA term only) we obtain

$$\hat{K}_{\rho} = \sum_{\mathbf{k} \neq 0} \left\{ \frac{1}{2} \rho_{-\mathbf{k}} \hat{\pi}_{\mathbf{k}} - \frac{1}{4\varepsilon_k} \hat{\pi}_{-\mathbf{k}} \hat{\pi}_{\mathbf{k}} \right\}, \quad (7)$$

ε_k is the energy of a free particle:

$$\varepsilon_k = \frac{\hbar^2 k^2}{2m}.$$

III. EQUATIONS OF MOTION FOR GREEN FUNCTIONS

Since the total energy of the system E is the average value of the Hamiltonian we need to know the way of averaging our expressions. In order to find the average values of such expressions as $\rho_{\mathbf{k}_1} \rho_{\mathbf{k}_2}$, $\hat{\pi}_{\mathbf{k}_1} \rho_{\mathbf{k}_2}$, etc. we will use two-time temperature Green functions [11]:

$$\langle\langle A(t) | B(t') \rangle\rangle = i\theta(t-t') \langle [A(t), B(t')] \rangle \quad (8)$$

with operators given in the Heisenberg representation, θ is the Heaviside step function. The following designations will be used:

$$G_{\rho\rho}(\mathbf{k}_1, \mathbf{k}_2) \equiv \langle\langle \rho_{\mathbf{k}_1} | \rho_{\mathbf{k}_2} \rangle\rangle,$$

$$G_{\rho\pi}(\mathbf{k}_1, \mathbf{k}_2) \equiv \langle\langle \rho_{\mathbf{k}_1} | \hat{\pi}_{\mathbf{k}_2} \rangle\rangle, \quad \dots \quad (9)$$

The averaging might be symbolically represented by an operator $\hat{\mathcal{A}}$:

$$\langle AB \rangle = \hat{\mathcal{A}} G_{BA}. \quad (10)$$

We consider here only the case of $\mathbf{k}_2 = -\mathbf{k}_1 \equiv \mathbf{k}$ since such expressions appear in our Hamiltonian (5), (7). Therefore, the indexing of $\mathbf{k}_1, \mathbf{k}_2$ will be skipped for the sake of simplicity.

A. ρ -representation for the kinetic energy

It is easy to show that one can obtain the following equations of motion

$$\hbar\omega G_{\rho\rho}(\omega) = -\varepsilon_k G_{\rho\rho}(\omega) + G_{\pi\rho}(\omega),$$

$$\hbar\omega G_{\pi\rho}(\omega) = \varepsilon_k G_{\pi\rho}(\omega) + \varepsilon_k^2 (\alpha_k^2 - 1) G_{\rho\rho}(\omega) + \frac{1}{\pi} \varepsilon_k,$$

$$\hbar\omega G_{\pi\pi}(\omega) = \varepsilon_k G_{\pi\pi}(\omega) + \varepsilon_k^2 (\alpha_k^2 - 1) G_{\rho\pi}(\omega),$$

$$\hbar\omega G_{\rho\pi}(\omega) = -\varepsilon_k G_{\rho\pi}(\omega) + G_{\pi\pi}(\omega) - \frac{1}{\pi} \varepsilon_k, \quad (11)$$

where

$$\alpha_k = \sqrt{1 + \frac{2\varrho\nu_k}{\varepsilon_k}}, \quad \varrho = \frac{N}{V}. \quad (12)$$

Using the solutions of the above system we obtain the following mean values (the \mathbf{k} -dependence in Green functions is written for better visualization)

$$\langle \rho_{-\mathbf{k}} \rho_{\mathbf{k}} \rangle \equiv \hat{\mathcal{A}} G_{\rho\rho}(\mathbf{k}) \equiv S_k = \frac{1}{\alpha_k} \coth \frac{\varepsilon_k \alpha_k}{2T},$$

$$\langle \rho_{-\mathbf{k}} \hat{\pi}_{\mathbf{k}} \rangle \equiv \hat{\mathcal{A}} G_{\pi\rho}(\mathbf{k}) \equiv \tilde{\Pi}_k$$

$$= \varepsilon_k \left(\frac{1}{\alpha_k} \coth \frac{\varepsilon_k \alpha_k}{2T} - 1 \right) = \varepsilon_k (S_k - 1),$$

$$\langle \hat{\pi}_{-\mathbf{k}} \hat{\pi}_{\mathbf{k}} \rangle \equiv \hat{\mathcal{A}} G_{\pi\pi}(\mathbf{k}) \equiv \Pi_k$$

$$= \varepsilon_k^2 \frac{1 - \alpha_k^2}{\alpha_k} \coth \frac{\varepsilon_k \alpha_k}{2T} = \varepsilon_k^2 (1 - \alpha_k^2) S_k. \quad (13)$$

Here, the average $\langle \rho_{\mathbf{k}} \rho_{-\mathbf{k}} \rangle$ is nothing but the structure factor of the system.

B. Exact kinetic energy

In this case, the equations of motion read:

$$\begin{aligned} \hbar\omega \bar{G}_{\rho\rho}(\omega) &= -\varepsilon_k \bar{G}_{\rho\rho}(\omega) + \bar{G}_{\pi\rho}(\omega), \\ \hbar\omega \bar{G}_{\pi\rho}(\omega) &= -\varepsilon_k \bar{G}_{\pi\rho}(\omega) + \varepsilon_k^2 (\alpha_k^2 - 1) \bar{G}_{\rho\rho}(\omega) \\ &\quad + \bar{G}_{\xi\rho}(\omega) + \frac{1}{\pi} \varepsilon_k. \end{aligned} \quad (14)$$

Unlike the previous case when the kinetic energy operator was given in the ρ -representation, now it turned to be impossible to solve this system with respect to $\bar{G}_{\rho\rho}$ even in the RPA. The problem lies in the appearance of the functions with the higher orders of $(-i\hbar^2 \nabla/m)$ in each equation following the equation for $\bar{G}_{\xi\rho}$, etc., compare with (11). This fact is connected with the action of the kinetic energy operator: when constructing the equations of motion, it generates $\frac{1}{\sqrt{N}} \sum_{j=1}^N e^{-i\mathbf{k}\mathbf{r}_j} \left(\frac{-i\hbar^2}{m} \mathbf{k} \nabla_j \right)^n$, $n = 2, 3, \dots$, which cannot be expressed via $\rho_{\mathbf{k}}$ and $\hat{\pi}_{\mathbf{k}}$. Therefore, one should apply some approximation in order to obtain the closed system of the equations of motion.

Let us consider the system of two equations for the functions $\bar{G}_{\rho\rho}$ and $\bar{G}_{\pi\rho}$ making a suggestion that

$$\bar{G}_{\xi\rho} - 2\varepsilon_k \bar{G}_{\pi\rho} = 2\gamma_k(T) \varepsilon_k \bar{G}_{\rho\rho}, \quad (15)$$

with the factor of $\gamma_k(T)$ being of the energy dimension. Its form will be chosen further. A similar procedure is applied for the triplet of functions $\bar{G}_{\rho\pi}$, $\bar{G}_{\pi\pi}$, $\bar{G}_{\xi\pi}$.

Such a substitution returns us to system (11) but the quantity α_k looks different now, we will refer it as $\bar{\alpha}_k$:

$$\bar{\alpha}_k = \sqrt{1 + \frac{2\rho\nu_k}{\varepsilon_k} + \frac{2\gamma_k(T)}{\varepsilon_k}} \quad (16)$$

One should keep in mind that a bar over a letter means 'exact with respect to RPA'.

C. General properties of $\gamma_k(T)$

Let us consider the cases of low and high temperatures.

In the low-temperature limit the results obtained in ρ -representation are correct (the theory of Bogoliubov). Thus,

$$\gamma_k(T) \Big|_{T \rightarrow 0} = 0. \quad (17)$$

In the high-temperature limit, one has the expression for the structure factor:

$$S_k(T) \Big|_{T \rightarrow \infty} = \frac{1}{1 + \rho\nu_k/T}. \quad (18)$$

It leads to

$$2\gamma_k(T) \Big|_{T \rightarrow \infty} = 2T = \frac{4}{3}K, \quad (19)$$

where K is the kinetic energy per particle, in the high-temperature limit it equals to the classical expression $K = 3T/2$.

IV. EQUATION FOR $\gamma_k(T)$ AND CALCULATION OF ENERGY

One can calculate the free energy of the system using the expression [8]

$$F = F_0 + \int_0^1 d\lambda \Phi(\lambda), \quad (20)$$

F_0 is the free energy of non-interacting system, λ is the 'interaction turn-on' parameter, Φ is the potential energy given by

$$\frac{\Phi}{N} = \frac{\rho\nu_0}{2} + \frac{1}{2N} \sum_{\mathbf{k} \neq 0} \rho\nu_k \left(\frac{1}{\bar{\alpha}_k} \coth \frac{\varepsilon_k \bar{\alpha}_k}{2T} - 1 \right) \quad (21)$$

In order to integrate $\Phi(\lambda)$ in (20) we will use the integration over $\bar{\alpha}_k$ instead of λ . This involves the derivative $\partial\gamma_k/\partial\lambda$. One cannot find it without knowing the explicit dependence $\gamma_k(\lambda)$. In this situation, the most simple way is to use the method from [12] and to write the so called first difference:

$$\frac{\partial\gamma_k}{\partial\lambda} = \frac{\gamma_k - \gamma_k^0}{\Delta\lambda} = \gamma_k - \gamma_k^0 \quad (22)$$

since $\Delta\lambda = 1$. Here, γ_k^0 is the quantity γ_k for the ideal Bose-gas.

A. Low temperatures, $T < T_\lambda$

A self-consistent relation for obtaining the quantity $\gamma_k(T)$ might be sketched as follows:

$$\boxed{\text{Energy obtained from the averaged RPA-Hamiltonian}} = \boxed{\text{Energy calculated from the free energy as } E = -T^2 \frac{\partial F/T}{\partial T}}. \quad (23)$$

One should remember that every RPA-expression contains $\bar{\alpha}_k$ with $\gamma_k(T)$.

The left-hand side of the equation (23) equals

$$\frac{E}{N} = \frac{\varrho\nu_0}{2} + \frac{1}{N} \sum_{\mathbf{k} \neq 0} \left\{ \left(\frac{1}{2} \tilde{\Pi}_k - \frac{1}{4\varepsilon_k} \Pi_k \right) + \frac{1}{2} \varrho\nu_k (S_k - 1) \right\}, \quad (24)$$

where relation (13) is taken into account.

One has for the free energy:

$$\frac{F}{N} = \frac{F_0}{N} + \frac{\varrho\nu_0}{2} + \frac{1}{2N} \sum_{\mathbf{k} \neq 0} \varrho\nu_k \left\{ \frac{\varepsilon_k (\bar{\alpha}_k - \bar{\alpha}_k^0)}{\varrho\nu_k + \gamma_k - \gamma_k^0} - 1 + \frac{2T}{\varrho\nu_k + \gamma_k - \gamma_k^0} \ln \frac{1 - \exp(-\varepsilon_k \bar{\alpha}_k/T)}{1 - \exp(-\varepsilon_k \bar{\alpha}_k^0/T)} \right\}. \quad (25)$$

As a result, relation (23) is rewritten as follows:

$$\begin{aligned} & \frac{\varrho\nu_0}{2} + \frac{1}{2N} \sum_{\mathbf{k} \neq 0} \left[\left(\varepsilon_k \bar{\alpha}_k - \frac{\gamma_k}{\bar{\alpha}_k} \right) \coth \frac{\varepsilon_k \bar{\alpha}_k}{2T} - \varepsilon_k - \varrho\nu_k \right] = \\ & = K_0(T) + \frac{\varrho\nu_0}{2} + \frac{1}{2N} \sum_{\mathbf{k} \neq 0} \varrho\nu_k \left\{ \frac{2(\gamma_k^{0'} - \gamma_k')}{(\varrho\nu_k + \gamma_k - \gamma_k^0)^2} \ln \frac{\sinh \frac{\varepsilon_k \bar{\alpha}_k}{2T}}{\sinh \frac{\varepsilon_k \bar{\alpha}_k^0}{2T}} + \right. \\ & \left. + \frac{\varepsilon_k}{\varrho\nu_k + \gamma_k - \gamma_k^0} \left[(\bar{\alpha}_k - \bar{\alpha}_k'/T) \coth \frac{\varepsilon_k \bar{\alpha}_k}{2T} - (\bar{\alpha}_k^0 - \bar{\alpha}_k^{0'}/T) \coth \frac{\varepsilon_k \bar{\alpha}_k^0}{2T} \right] - 1 \right\}, \end{aligned} \quad (26)$$

where primes mean derivation over $\beta = 1/T$ and

$$\bar{\alpha}_k^0 = \sqrt{1 + \frac{2\gamma_k^0(T)}{\varepsilon_k}}. \quad (27)$$

For the $\bar{\alpha}_k, \bar{\alpha}_k^0$ derivatives we obtain:

$$\bar{\alpha}_k' = \frac{\gamma_k'}{\varepsilon_k \bar{\alpha}_k}, \quad \bar{\alpha}_k^{0'} = \frac{\gamma_k^{0'}}{\varepsilon_k \bar{\alpha}_k^0}. \quad (28)$$

The quantity γ_k^0 still remains unknown. We will try to find it utilizing the thermodynamic relations for the ideal Bose-gas.

Let us consider an arbitrary (no matter, interacting or non-interacting) system first. Its structure factor in the long-wave limit reads:

$$S_k(T) \Big|_{k \rightarrow 0} = \lim_{k \rightarrow 0} \frac{1}{\bar{\alpha}_k} \coth \frac{\varepsilon_k \bar{\alpha}_k}{2T} = \frac{T}{\varepsilon_0/2 + \varrho\nu_0 + \gamma_0}. \quad (29)$$

The expression ε_0 obviously equals to zero but we reserve it in the sense of the limit $k \rightarrow 0$, this will be necessary for the ideal gas case. Therefore,

$$\gamma_0 = \frac{T}{S_0(T)} - \varrho\nu_0 - \frac{\varepsilon_0}{2} = \frac{1}{\varrho\kappa_T} - \varrho\nu_0 - \frac{\varepsilon_0}{2}, \quad (30)$$

where the connection between structure factor at $k = 0$

and the isothermic compressibility κ_T is taken into account. For the ideal gas $\nu_k = 0$, thus at low temperatures one obtains:

$$\gamma_0^0 = \left(\frac{\partial P_0}{\partial \varrho} \right)_T = 0 \quad \text{for } T < T_c, \quad (31)$$

where P_0 is the ideal Bose-gas pressure and T_c is the Bose-condensation temperature. As a result, the ideal Bose-gas structure factor S_k^0 reads:

$$S_k^0(T) \Big|_{k \rightarrow 0} = \frac{2T}{\varepsilon_k} \propto \frac{1}{k^2}, \quad (32)$$

as it should be [13].

Now, we accept for the simplicity that the dependencies on the wave vector and the temperature in quantities γ_k and γ_k^0 separate:

$$\begin{aligned} \gamma_k(T) &= \gamma(T) f_k, & \gamma_k^0(T) &= \gamma^0(T) f_k^0, \\ f_0 &= f_0^0 = 1. \end{aligned} \quad (33)$$

The above statement means the separation of the 'primary' temperature dependence in the comparison with the 'secondary' dependence on the wave vector. The latter will be integrated up when calculating the thermodynamic properties. The condition $f_0 = f_0^0 = 1$ is nothing but the specific normalization condition.

Now, from $\gamma_0^0 = 0$ one obtains $\gamma^0 = 0$ and, taking (28)

into account, also $\gamma_k^{0'} = 0$, $\bar{\alpha}_k^{0'} = 0$. These equalities are valid for $T < T_c$.

Let us consider the expansion of (26) in terms of γ in

order to obtain the equation for $\gamma_k(T)$. The first-order terms read:

$$\begin{aligned} T\dot{\gamma}(T) \int_0^\infty dk k^2 f_k \left\{ \frac{2T}{\varrho\nu_k} \ln \frac{\sinh \frac{\varepsilon_k \alpha_k}{2T}}{\sinh \frac{\varepsilon_k}{2T}} - \frac{1}{\varrho\nu_k} \coth \frac{\varepsilon_k \alpha_k}{2T} \right\} + \\ + \gamma(T) \int_0^\infty dk k^2 f_k \left\{ \frac{1}{\alpha_k} \coth \frac{\varepsilon_k \alpha_k}{2T} + \frac{\varepsilon_k}{\varrho\nu_k} \left[\coth \frac{\varepsilon_k}{2T} - \alpha_k \coth \frac{\varepsilon_k \alpha_k}{2T} \right] \right\} = 0, \end{aligned} \quad (34)$$

where the dot denotes the derivative with respect to the temperature and α_k is defined by the Bogoliubov's expression (12).

Similar expansion for energy (24) leads to the following equation:

$$\begin{aligned} E = \frac{1}{4\pi^2 \varrho} \int_0^\infty dk k^2 \varepsilon_k \left[\alpha_k \coth \frac{\varepsilon_k \alpha_k}{2T} - \frac{\alpha_k^2 + 1}{2} \right] - \gamma \frac{1}{4\pi^2 \varrho} \int_0^\infty dk k^2 f_k \frac{1}{2T} \varepsilon_k \frac{1}{\sinh^2 \frac{\varepsilon_k \alpha_k}{2T}} \\ + \gamma^2 \frac{1}{4\pi^2 \varrho} \int_0^\infty dk k^2 f_k^2 \left\{ \frac{1}{4T\alpha_k} \left[\frac{1}{\alpha_k} + \frac{\varepsilon_k \coth \frac{\varepsilon_k \alpha_k}{2T}}{T} \right] \frac{1}{\sinh^2 \frac{\varepsilon_k \alpha_k}{2T}} + \frac{1}{2T\varepsilon_k \alpha_k^3} \coth \frac{\varepsilon_k \alpha_k}{2T} \right\}. \end{aligned} \quad (35)$$

The last item in the second integral causes some difficulties since it does not converge at $k \rightarrow \infty$. One can ensure the convergence by means of the function f_k (it is arbitrary by now). The next problem with this item is the incorrect behaviour of the heat capacity at low temperatures. As it will be shown further, $\gamma(T)$ is proportional to T when $T \rightarrow 0$. It leads to the linear temperature dependence of heat capacity while one should have $\propto T^3$. We can avoid this problem by choosing f_k in the special form. We will demand the following:

$$\int_0^\infty dk k^2 f_k^2 \frac{1}{\varepsilon_k \alpha_k^3} = 0. \quad (36)$$

The similar problem is with γ^3 giving quadratic dependence with respect to T . Thus, the second equation:

$$\int_0^\infty dk k^2 f_k^3 \frac{1}{\varepsilon_k^2 \alpha_k^5} = 0. \quad (37)$$

Only a complex f_k can satisfy both these equation. For the sake of simplicity in calculations we have chosen f_k in the following form:

$$f_k = \begin{cases} 1, & 0 \leq k < k_1, \\ if_{\text{II}}, & k_1 \leq k < k_2, \\ -f_{\text{III}}, & k_2 \leq k < k_3, \\ -if_{\text{IV}}, & k_3 \leq k < k_4, \\ 0, & \text{otherwise} \end{cases} \quad (38)$$

with equally spaced intervals, $k_n = n \times 3 \text{ \AA}^{-1}$. Three quantities $f_{\text{II}}, f_{\text{III}}, f_{\text{IV}}$ are necessary to satisfy both real

and complex terms in the equations (36–37). We obtain

$$f_{\text{II}} = 1.061, \quad f_{\text{III}} = 2.015, \quad f_{\text{IV}} = 1.886.$$

The equation for γ might be rewritten as follows:

$$a_1(T) T\dot{\gamma} + a_0(T)\gamma + O(\gamma^2) = 0 \quad (39)$$

where the sense of the coefficient functions $a_1(T), a_0(T)$ is clear from Eq. (34).

Neglecting higher-order terms one obtains:

$$\gamma(T) = CT \exp \left\{ - \int^T \frac{d\tau}{\tau} \left[\frac{a_0(\tau)}{a_1(\tau)} + 1 \right] \right\}, \quad (40)$$

where the constant C is unknown yet. One can define it studying the behaviour of the isothermic compressibility near the absolute zero (30). We obtained the following value by averaging the results of the data [14] interpolation at the lowest temperatures over four, five and six points:

$$C \equiv \dot{\gamma}(0) \simeq 5.89. \quad (41)$$

At low temperatures, $\gamma(T) \propto T$. The deviation from this linear dependence is slight when temperature increases.

One should notice that the correct results must be expected only for the temperatures at which it is possible to neglect the higher-order terms in the equation for γ_k (34). In other words, if $2\gamma_k/\varepsilon_k > 1$ then the results are not correct. Taking into account that the typical wave

vector absolute value for ${}^4\text{He}$ is 2 \AA (it corresponds to the first maximum on the structure factor curve) we obtain the upper limit for the applicability of our results as $T/T_c \simeq 2/3$.

B. High temperatures, $T > T_\lambda$

In this case one can use the techniques similar to the described in the previous sections for low temperatures. Unfortunately, this seems to be a rather complicated

problem. Firstly, the function $\gamma_k^0(T)$ is not equal to zero already. Secondly, the quantity $\gamma_k(T)$ is not small in this temperature region and it is not possible to use the expansion into series, we also did not manage to solve equation (26) (the initial condition for the differential equation is unknown). Therefore, for the simplification of the calculations we decided to substitute $\gamma_k(T)$ with $2K/3$, see (19), where K is the kinetic energy per particle.

We have rewritten the expression for the free energy (25) in order to obtain the equation for $\Delta K \equiv K - K_0$:

$$\begin{aligned} \Delta K = & \frac{1}{4\pi^2} \int_0^\infty dk k^2 \nu_k \left\{ \frac{1}{Z_k} \varepsilon_k \left[\alpha_k \coth \frac{\varepsilon_k \alpha_k}{2T} - \alpha_k^0 \coth \frac{\varepsilon_k \alpha_k^0}{2T} \right] - \frac{1}{\alpha_k} \coth \frac{\varepsilon_k \alpha_k}{2T} \right. \\ & \left. + \frac{2}{3} \frac{\partial \Delta K}{\partial T} \left[\frac{T}{Z_k^2} \varepsilon_k (\alpha_k - \alpha_k^0) - \frac{T}{Z_k} \frac{1}{\alpha_k} \coth \frac{\varepsilon_k \alpha_k}{2T} + \frac{2T^2}{Z_k^2} \left(\ln \left(1 - e^{-\varepsilon_k \alpha_k / T} \right) - \ln \left(1 - e^{-\varepsilon_k \alpha_k^0 / T} \right) \right) \right] \right. \\ & \left. + \frac{2}{3} \dot{K}_0 \frac{T}{Z_k} \left[\frac{1}{\alpha_k^0} \coth \frac{\varepsilon_k \alpha_k^0}{2T} - \frac{1}{\alpha_k} \coth \frac{\varepsilon_k \alpha_k}{2T} \right] \right\}, \end{aligned} \quad (42)$$

$$Z_k = \varrho \nu_k + \frac{2}{3} \Delta K, \quad \alpha_k = \sqrt{1 + \frac{2\varrho \nu_k}{\varepsilon_k} + \frac{4}{3} \frac{\Delta K + K_0}{\varepsilon_k}}, \quad \alpha_k^0 = \sqrt{1 + \frac{4}{3} \frac{K_0}{\varepsilon_k}},$$

where the dot means derivation with respect to T : $\dot{K}_0 = \partial K / \partial T$.

Having calculated the kinetic energy from Eq. (42) we then proceed to the calculation of the total energy. After the numerical derivation of the latter we obtain the specific heat of the liquid helium. This result is given in Fig. 1 together with the data for the low temperatures from the previous subsection.

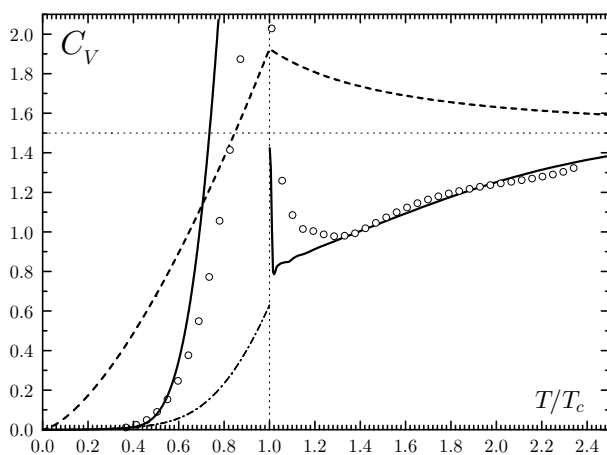


Fig. 1. Energy of liquid helium-4. Solid line — calculated energy, dashed line — energy of ideal Bose-gas; dashed-dotted line — Bogoliubov's approximation.

V. DISCUSSION

As one can see from Fig. 1 we obtained a fairly good description in the region $0 \leq T/T_c < 0.65$, as it was expected. In the normal phase ($T > T_c$) a similar situation is obtained for the temperatures $T/T_c > 1.32$. It is necessary to say that the phase transition temperature T_c in our case coincides with the respective temperature of the ideal Bose-gas. One should use the effective mass m^* of the helium atom instead of that of free atom $m = 4.0026 \text{ a. m. u.}$ As will be shown elsewhere [15], it is possible to obtain the effective mass in a self-consistent manner within the Green function formalism. The ground-state ($T = 0 \text{ K}$) value equals to $m^* \simeq 1.58 m$. We assume that the temperature dependence of the effective mass is not significant in the temperature region under consideration: $m^*(T) \simeq \text{const} = m^*(0) = 1.58 m$. Therefore, one obtains the transition temperature of 1.99 K vs experimental 2.17 K [15].

ACKNOWLEDGEMENTS

Author is very grateful to Prof. I. Vakarchuk for the valuable discussions about the subject of the research presented and for reading the manuscript.

-
- [1] N. N. Bogoliubov, *Izv. AN SSSR, ser. fiz.* **11**, 77 (1947) [in Russian].
- [2] H. Kleinert, *Phys. Lett. A* **277**, 205 (2000).
- [3] V. F. Sears, *Phys. Rev. B* **28**, 5109 (1983).
- [4] R. A. Aziz, V. P. S. Nain, J. S. Carley, W. L. Taylor, G. T. McConville, *J. Chem. Phys.* **70**, 4430 (1979).
- [5] D. M. Ceperley, E. L. Pollock, *Phys. Rev. Lett.* **56**, 351 (1986).
- [6] D. M. Ceperley, R. O. Simmons, R. C. Blasdell, *Phys. Rev. Lett.* **77**, 115 (1996).
- [7] D. M. Ceperley, *Rev. Mod. Phys.* **67**, 279 (1995).
- [8] I. O. Vakarchuk, *J. Phys. Stud. (Lviv)* **1**, 156 (1997); **3**, 264 (1999) [in Ukrainian].
- [9] I. O. Vakarchuk, V. V. Babin, A. A. Rovenchak, *J. Phys. Stud. (Lviv)* **4**, 16 (2000).
- [10] Yu. A. Tserkovnikov, *DAN SSSR* **159**, 1023 (1964) [in Russian].
- [11] D. N. Zubarev, *Neravnovesnaia statisticheskaia termodinamika* (Nauka, Moscow, 1971) [in Russian]; D. N. Zubarev, *Nonequilibrium statistical thermodynamics* (Consultants Bureau, New York, 1974).
- [12] I. O. Vakarchuk, *Vstup do problemy bahatiokh til* (Introduction into the Many-Body Theory) (Lviv University Publisher, Lviv, 1999) [in Ukrainian].
- [13] N. N. Bogoliubov, *Izbrannye trudy v trekh tomakh. T. 3* (Selected Works in Three Volumes. Vol. 3) (Naukova dumka, Kiev, 1971), p. 216 [in Russian].
- [14] V. D. Arp, R. D. McCarty, D. G. Friend, *Natl. Inst. Stand. Technol. Tech. Note* 1334 (revised) (1998).
- [15] A. Rovenchak, e-print cond-mat/0203484.

ЕНЕРГІЯ ТА ПИТОМА ТЕПЛОЄМНІСТЬ ГЕЛІУ-4 В НАДПЛИННІЙ І НОРМАЛЬНІЙ ФАЗАХ

А. А. Ровенчак

*Львівський національний університет імені Івана Франка, кафедра теоретичної фізики,
вул. Драгоманова, 12, Львів, 79005, Україна*

За допомогою двочасових температурних функцій Гріна обчислено енергію й питому теплоємність ^4He . Розвинуто підхід, що поліпшує наближення хаотичних фаз і дає правильну поведінку обчисленої питомої теплоємності при температурах $0 < T/T_c < 0.65$ та $T/T_c > 1.32$, де T_c — температура фазового переходу.